

# Swiss-American Chamber of Commerce

P.O. Box 26007, San Francisco, CA 94126-6007,  
e-mail: [swissamericanchamber@hotmail.com](mailto:swissamericanchamber@hotmail.com)

Phone (415) 433-6679  
[www.amcham.ch](http://www.amcham.ch)

California – San Francisco Chapter

We invite you to join us for one of our **SOCIAL EVENTS**. This time for a different look at the Wine Country with visits to the

## DI ROSA PRESERVE and the STARMONT WINERY

We will meet and begin the day at the **DI ROSA PRESERVE**, well known for one of the largest collections of contemporary San Francisco Bay Area art in the nation, with over 2,200 pieces of art by over 900 regional artists. Please visit their website [www.dirosapreserve.org](http://www.dirosapreserve.org) to learn more about the preserve.



Following the 2.5 hour guided Discovery Tour of the preserve's gallery, residence and outdoor exhibits, we will take a quick 10 minute drive to Merryvale's **STARMONT WINERY**, owned by the Schlatter Family of Switzerland, where you will get a short introduction by their winemaking staff discussing sustainable farming, tour the winery that is powered by solar energy and taste some of their award winning wines. A rustic lunch and more wine will be served immediately following the tour. The Schlatter Family agreed to make a special offer for some wines that you will taste at their Starmont winery. Learn more about the winery by visiting [www.merryvale.com](http://www.merryvale.com).

You are free to leave after lunch and explore more of the beautiful Carneros Region and Napa Valley on your own.

*(For directions to the di Rosa Preserve, see the next page.)*



**Date:** Saturday, June 14, 2008  
**Location:** di Rosa Preserve, 5200 Carneros Highway 12/121, Napa Co.  
**Time:** 10:00 a.m. – 12:30 p.m. Tour of the Preserve, followed by 1:00 p.m. (approx.) Tour, Tasting and Lunch at the Starmont Winery  
**Cost:** \$30.00 for Members  
**Deadline:** Saturday, May 31, 2008

*Space is strictly limited to 30 people! Event for Members Only!*

Please send your reservations and checks (payable to SACC) to arrive no later than May 31, 2008, to:  
Kurt Engel, 2029 Asilomar Drive, Antioch, CA 94509 (Tel. 925 625-0221)

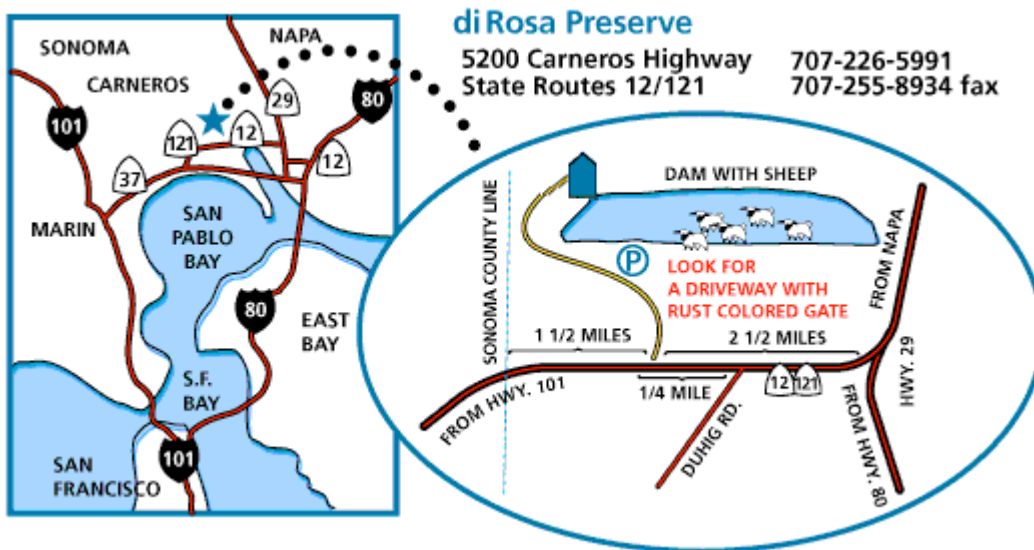
..... *Please Detach Here* .....  
SACC 06/14/2008

Name(s): \_\_\_\_\_ Telephone: \_\_\_\_\_

Address: \_\_\_\_\_

E-mail Address: \_\_\_\_\_ Check enclosed for: \$ \_\_\_\_\_

## Directions to the di Rosa Preserve



### From San Francisco

Drive North on Hwy 101 for approx. 30 miles. Exit at Hwy 37, toward Napa and Sonoma. Continue 7.5 miles. Turn Left at Hwy 121/12, past Infineon Raceway, continuing for 6.7 miles. Veer Right at four-way flashing light intersection, staying on Hwy 121/12. Continue 6.7 miles. Turn left into the di Rosa Preserve.

### From the East Bay

Drive East on Hwy 80. Exit at Hwy 37, toward Sonoma and Napa. Continue for approx. 1.5 miles and turn right onto Hwy 29. Stay on Hwy 29 for approx. 15 miles. Turn left onto Hwy 121/12 toward Sonoma. Continue 2 miles. Turn right into the di Rosa Preserve, just beyond Domaine Carneros winery

### From Santa Rosa:

1. Take Hwy 12 toward Sonoma and Napa. Turn left onto Hwy 121/12 toward Napa. Continue 6.7 miles. Turn left into the di Rosa Preserve.
2. Take Hwy 101 South. In Petaluma, take Hwy 116 East toward Sonoma and Napa. Continue 12 miles. Turn left at the 121/12 intersection. Continue 6.7 miles. Turn left into the di Rosa Preserve.

### From St. Helena:

Drive south on Hwy 29 past the town of Napa. Turn right onto Carneros Hwy 121/12 toward Sonoma, and continue 2.5 miles. The di Rosa Preserve is on the right, just beyond Domaine Carneros winery.